



ST JOHN'S
LUTHERAN
PRIMARY SCHOOL
PRAISE LOVE SERVE



Swimming

Well done to Ruby, Fynn, Jordan and Zeke for their great efforts in participating in the Division swimming in Warrnambool last Thursday. Also to Fynn for representing St. John's at the District Golf on Friday. Well done.

Next week will be a shorter week with the public holiday on Monday. The Foundation students will then be attending school every day.

We welcome Mrs Rebecca Greening to our staff team as Chaplain. Rebecca has previously worked in schools as a Chaplain, and will predominately work on Thursday, and Friday mornings.

Our School Captains will be attending the GRIP Leadership Conference in Mount Gambier on Tuesday. We acknowledge the generous support from Portland Aluminium who provides the tickets and bus for this event.



NAPLAN

Students in Years 3 and 5 will be participating in the annual NAPLAN tests in reading, writing, language conventions (spelling, grammar and punctuation) and numeracy next week.

Sport's Day

On Friday 22nd March, we look forward to our school Athletic Sport's Day. All students are expected to attend and to participate in all activities. Parents, grandparents, and friends are welcome to come along and cheer the students in their races. The events will take place on the school oval beginning at 9.00am. There will be no Chapel service or Assembly on this day. There will be a free BBQ lunch provided by the school for students and families. For catering purposes, please complete the separate note that will be sent home with details. At 1.30pm we will announce the results including age group champions. Afterwards, parents can take their child/ren home early, but we ask that you please notify the classroom teacher. For our new families, information that may be helpful to you about our Athletics include:



- You are welcome to come for all or part of the day. The children really appreciate seeing you.
- If you would like to help with an event, please see Mrs Alexander.
- You are welcome to have lunch with your child/ren.
- The lunch will be served in the undercover area.
- All activities happen on our school ovals and grounds. We will have chairs available on the oval for you to use.
- Students can come dressed in their normal school sports uniform or come dressed in the colours of their sports team. For example, those in Glenelg can come to school with a blue t-shirt, ribbons etc., Fitzroy- yellow and Surrey - red. We encourage children to bring along streamers and cheer for their friends.
- After the sports day finishes, the results will be announced at 1.30pm.



Term 1 Week 6

Grandparent's Day

Grandparent's/ Special Friends Day is on Thursday 28th March. The children are looking forward to showcasing their work and our school. To assist with our planning, we would appreciate knowing in advance if Grandparents are planning to attend. The day will begin at 9.00am with a Chapel in the Unity Centre followed by classroom visits. Guests will then be asked to make their way back to the undercover area at 10.45 to view the Easter hat parade and then conclude with morning tea at 11.00am.

NCCD

The Nationally Consistent Collection of Data on School Students with Disability (NCCD) provides State and Federal Governments with information they need to plan for how to support students with disability. Our school provides data to the Australian Government and all information provided is protected by privacy laws. A separate letter has been sent home today which explains the data collection, its purpose, legislative basis, and to whom NCCD data will be disclosed.

Applications for CSEF is now open.

"Camps Sports and Excursion Funding (CSEF)"

The Camps, Sports and Excursions Fund provides payments for eligible students to attend activities like school camps, trips, school organized sports programs, outdoor education programs, excursions and incursions. Families holding a valid means-tested concession card or temporary foster parents are eligible to apply. A Special Consideration category also exists. Payments are \$125 per eligible primary student. Students starting Foundation or Year 7 who are eligible for CSEF may also receive assistance toward cost of school uniforms.

For more information visit the CSEF website <https://www.vic.gov.au/camps-sports-and-excursions-fund>

Playgroup

Our Playgroup is every Wednesday and Thursday between 9.00-11.00am. For more information, please contact our front office on 5523 3833, Facebook page or our Playgroup Coordinator, Mrs Jess Cook jcook@stjohnsportland.vic.edu.au

Grandparent's or your Special Person Day!



Last day of Term 1 - 28th March 2024

- Chapel & Assembly 9:00am
- Grandparents/Special Person visit class rooms 9:30am-10:40am
- Easter Bonnet Parade in the undercover area 10:45am
- Morning Tea for Grandparent's/Special Person's in the hall 11:00am



Anaphylaxis

Some of you may know someone who is affected by anaphylaxis, a life-threatening allergic reaction. Our school does its best to be an allergy aware school. Staff have had training in severe allergy management, and we have implemented lots of strategies to help keep students at risk of anaphylaxis as safe as we can. We ask that you help us educate your child on the importance of not sharing food with others, washing hands after eating and calling out to an adult if they think their friend is sick.

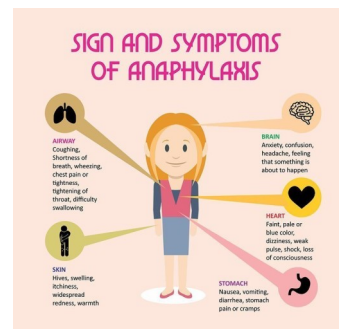
A food allergy is an immune system response to a normally harmless food protein that the body believes is harmful. When the individual eats food containing that protein, the immune system releases massive amounts of chemicals, triggering symptoms that can affect a person's breathing, gastrointestinal tract, skin, and/or heart. Anaphylaxis is the most severe form of allergic reaction and is potentially life-threatening. It must be treated as a medical emergency, requiring immediate treatment and urgent medical attention.

It is estimated that up to 400,000 (2%) Australians, including 1 in 20 children suffer from food allergies and some of them will experience a life-threatening (anaphylactic) reaction.

Symptoms of food allergy can include:

Mild to moderate allergic reaction

- Tingling of the mouth
- Hives, welts, or body redness
- Swelling of the face, lips, eyes
- Vomiting, abdominal pain (note these are signs of a severe allergic reaction if the person has insect allergy)



Severe allergic reaction - ANAPHYLAXIS

- Difficult/noisy breathing
- Swelling of the tongue
- Swelling or tightness in the throat
- Difficulty talking or hoarse voice
- Wheeze or persistent cough
- Persistent dizziness or collapse
- Pale and floppy (young children)

9 foods cause 90% of food allergies. These foods are:

- Egg
- Sesame
- Milk
- Soy
- Peanut
- Fish
- Tree nuts (cashew, almond, pistachio etc)
- Crustacea (prawns, lobster, crabs etc)
- Wheat

Peanuts are the leading cause of severe allergic reactions, followed by tree nuts, shellfish, fish, and milk. Adrenaline (epinephrine) is the first line treatment for severe allergic reactions and can be administered via an injector.

To learn more about anaphylaxis and food allergies, go to www.allergyfacts.org.au and www.allergy.org.au





Child Safety

What are the Child Safe Standards?

- The Child Safe Standards (the Standards) began in Victoria in January 2016.
- The Standards help keep children safe from abuse and harm.
- There are 11 Child Safe Standards.
- Organisations working with children¹ must *comply* with the Standards. *Comply* means that your organisation must have things in place to show that you² follow and meet each standard.

Child Safe Standard 2

Organisation's leaders focus on keeping children safe and well. Organisations have processes to find, avoid, and stop risks of child abuse or harm.



Your organisation must:

- make a **public commitment** to child safety. This means that you let the community know that child safety is important to your organisation
- have a **Child Safety and Wellbeing Policy**. This is a document that explains how your organisation keeps children safe
- make sure that everyone in the organisation promotes child safety
- have a written **Code of Conduct** for staff and volunteers. This is a document that explains to staff how to behave around children and what is not OK
- document about how you find, avoid, and stop risks to children
- make sure that staff understand how to share information and keep records about child safety.

St. John's Lutheran Primary School is a Child Safe School



Chapel...

Tomorrow the Year 2 class are leading Chapel. All are welcome to attend.
Assembly will follow.



Students Awards



Term 1 Week 5 –RECIPIENTS

Foundation/Year 1A

- ☆ Noah Heron
- ☆ August Benbow

Foundation/Year 1B

- ☆ Max Boyer
- ☆ Mehar Gill

Term 1 Week 5 –RECIPIENTS

Year 2

- ☆ Essie Rowe
- ☆ Callum Malcolm

Year 3/4

- ☆ Milo Gollasch
- ☆ Della-Ann Wilson

Year 5/6

- ☆ Scarlett Spencer
- ☆ Kayla Wombwell

Dolphin Award Recipient

*Harper
Ponturo*

Term 1 Week 5 –Music Award

- ☆ Nate Ball
- ☆ Emily Carr





ST JOHN'S
LUTHERAN
PRIMARY SCHOOL
PRAISE LOVE SERVE

SRC Fundraiser

It's Easter Time!!!

On the last day of the term there will be an Easter Hat Parade coinciding with Grandparent's Day on Thursday the 28^h of March.

Throughout week 9 we're setting up the 'Guess the Egg Jar' challenge out the front of the library. It's a gold coin donation to take a guess, and you can do it in the morning, at lunch, or after school.



This Easter, the S.R.C has decided to do a fundraiser for the bush fires in Pomonal and Dadswell's Bridge to support their communities and all the schools that have been shut down.



During lunchtimes, SRC will be selling Easter themed biscuits for a gold coin donation.





ST JOHN'S
LUTHERAN
PRIMARY SCHOOL
PRAISE LOVE SERVE

Term 1 Week 6





ST JOHN'S
LUTHERAN
PRIMARY SCHOOL
PRAISE LOVE SERVE

Devotion...

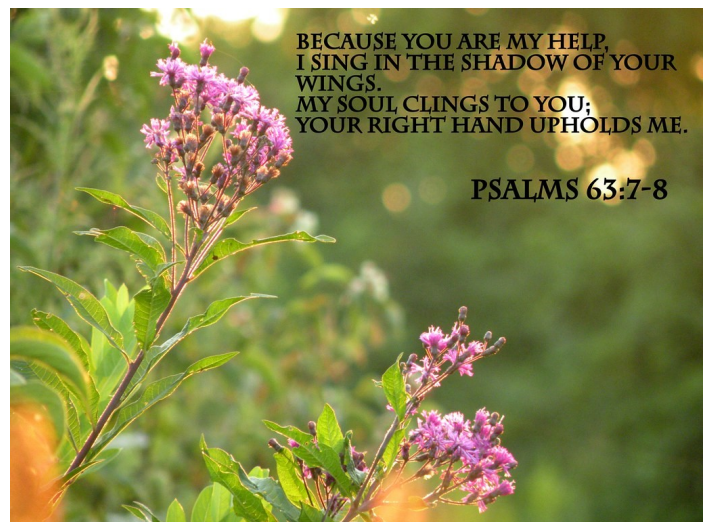
DON'T GO IT ALONE

***You are my help. Because of your protection, I sing.
I stay close to you. You support me with your right hand.***
- Psalm 63:7-8 (ICB)

It is a simple fact: You cannot make it by yourself. More importantly, you don't *have* to make it by yourself. It's up to you.

Yes, there will be days when everything goes just the way you planned. You've got everything under control, and you are living on top of the world. But then—BAM! Trouble—*big* trouble—comes and yanks away the control you thought you had. An illness, an accident, it's something you never saw coming.

You know you need help. Let Me help you. I already know the answers. Let Me guide you to them. But first you have to choose: Do you stubbornly go it alone? Or do you humbly come to Me and let Me help you? Please, choose Me.





OUR SCHOOL CALENDAR

| | MONDAY | TUESDAY | WEDNESDAY | THURSDAY | FRIDAY | SAT/SUN |
|------------------------|--|---|--|--|---|---|
| Term 1 Week 7 | 11th March Labour Day— Public Holiday | 12th March - GRIP—School Leaders | 13th March - Playgroup gam-11am - Foundations Start full time - NAPLAN starts | 14th March - Playgroup gam-11am | 15th March - Chapel & Assembly gam | 16th & 17th March |
| Term 1 Week 8 | 18th March | 19th March | 20th March - Playgroup gam-11am - Secondary - Experience Day, Year 6 Students | 21st March - Playgroup gam-11am | 22nd March - Sports Carnival | 23rd & 24th March |
| Term 1 Week 9 | 25th March | 26th March | 27th March | 28th March - Chapel & Assembly gam - Grandparents Day - Easter Bonnet Parade 10:45am - Grandparents Morning Tea 11:00am - School Finish 2:30pm | 29th March Good Friday | 30th & 31st March Easter Saturday & Sunday |
| School Holidays | 1st April Easter Monday | 2nd April | 3rd April | 4th April | 5th April | 6th & 7th April |



ST JOHN'S
LUTHERAN
PRIMARY SCHOOL
PRAISE LOVE SERVE

Community Notices...

PORTLAND BLUE LIGHT DISCO

22ND MARCH, 2024

8-10PM | 9 TO 14 ONLY | \$10 ENTRY
*Plus Booking Fee

Portland Civic Hall
30 Bentnick Street, Portland

Contact: LSC Lee-Anne Nelson 03 5522 1500
Please ensure children have an emergency number on them.

ALL TICKETS MUST BE PURCHASED ONLINE VIA THE QR CODE

Facebook: Portland Blue Light
Instagram: BLUELIGHT_VIC

WEAR FOOTY COLOURS



Portland Secondary College
Creating the opportunities

Experience Day - Wednesday 20th March

2024 Grade 6 students are invited to come and spend the day with us at PSC.

Experience a day as a Secondary school student and learn what our school has to offer.

Important information about this day has been delivered to your primary School.

Scholarship Application Packages will be shared on this day.

Please RSVP by Wednesday 13th March via QR code or the General Office.

Can't be there on the day and would like to book a tour or need more information contact the General Office on 5523 1344.



Facebook: portlandseccollege

Instagram: portland_secondary_college



GET STARTED TODAY!

MOVE MORE IN 2024

4 WEEKS FREE, \$0 START UP FEES & MORE!



Portland Secondary College
Creating the opportunities

2025 Year 7 Information Evening

Portland Secondary College invites you to an Information Evening for prospective 2025 Year 7 Students and Families.

Join us for information/question and answer sessions for parents/ guardians. Following the Information sessions we invite you to join a school tour conducted by our school leaders.

Tuesday 6th March at 6.30pm

Can't be there on the night? Contact our General Office on 5523 1344 to arrange a school tour.



Facebook: portlandseccollege Instagram: portland_secondary_college Website: portlandsc.vic.edu.au

